

LOHAS

AUSTRALIA

ECO BRICK COLLECTION

ARCHIPOLIS SPEC GUIDE

LOHASAU.COM

Eco-brick is the perfect choice for environmentally aware housebuilders

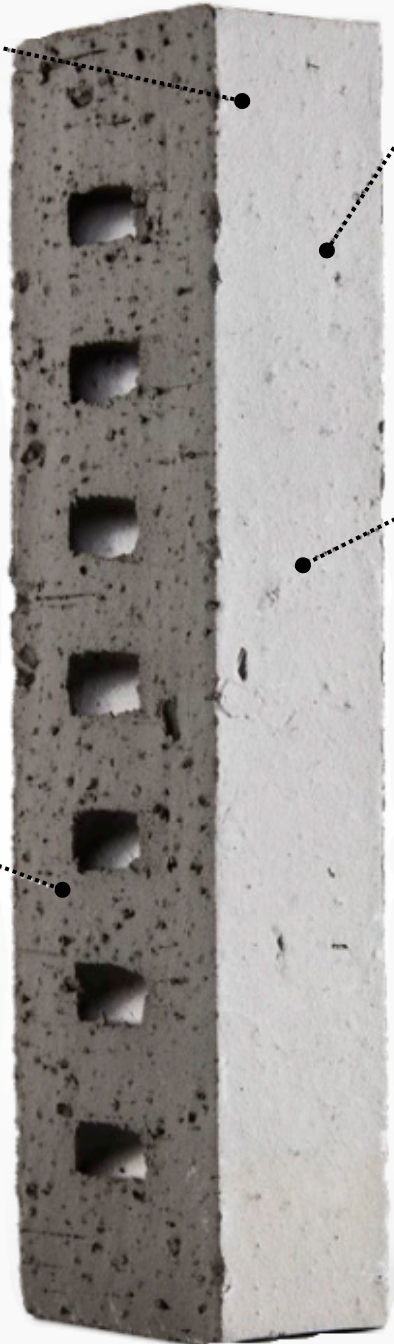
Eco-brick offers all the benefits and features of traditional ceramic facing bricks, but in a slimmer format: An Eco-brick is 35 mm narrower, without compromising durability, strength or stability. The slimline size means 30% more can be fired on a kiln car at any one time. On a like-for-like brick this dematerialisation (doing more with less) results in reducing our overall CO₂ impact.

Slank Eco-brick formaat

Smooth to slightly rough surface

Tight

Limited width



Archipolis: a rich collection

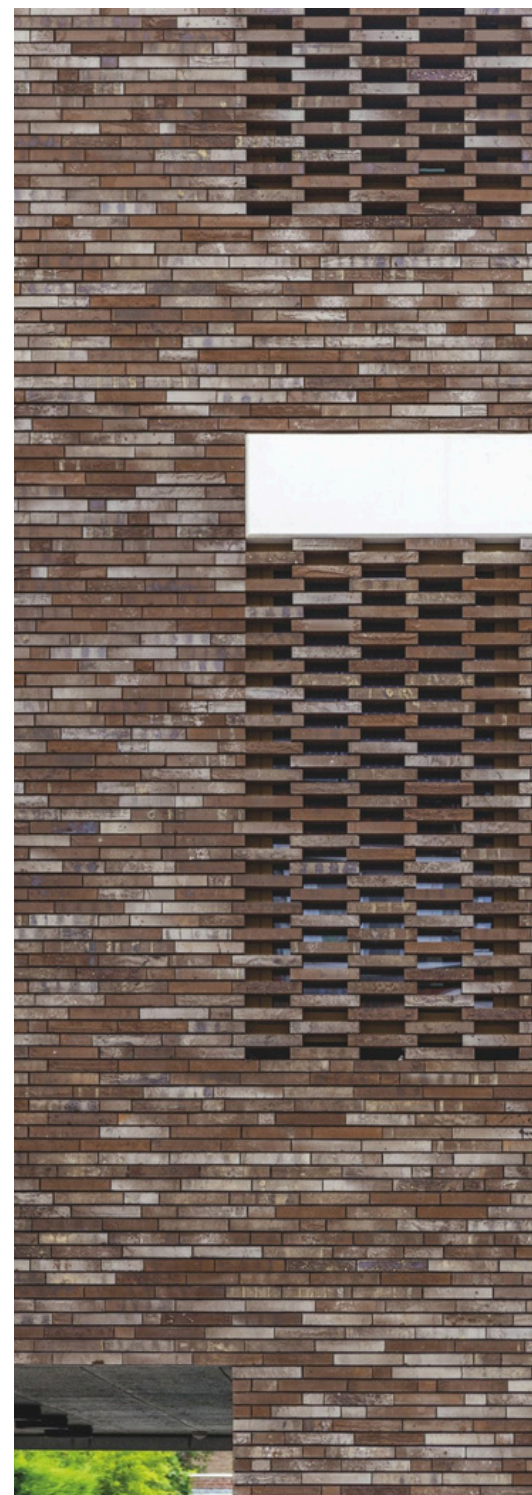
-

Archipolis represents a lavish, opulent collection boasting vibrant engobes and bold textures and shades. Its palette is simultaneously warm and fresh, bright and rich. This slim stone opens up unique visual possibilities, making it perfect for creating a sleek, character-filled facade. With its sharp lines and narrow width, Archipolis offers room for added insulation and additional living space. The collection exudes a dark, atmospheric passion, blending a touch of contemporary decadence with a stylish retro aesthetic.

Exclusively in the slim Eco-brick format

-

In terms of sustainability, Archipolis is an excellent choice. These facing bricks will be exclusive offered in the slimmer Eco-brick format that extra offers space for insulation or creates more living space.



ARCHIPOLIS

COLOUR RANGE



Archipolis Argos grey
Eco-brick ± 400x65x40 mm

Porosity: ≤ 6%
IW1 - very low absorption



Archipolis Byblos Grey
Eco-brick ± 400x65x40 mm

Porosity: ≤ 6%
IW1 - very low absorption



Archipolis Tilis Beige
Eco-brick ± 400x65x40 mm

Porosity: ≤ 6%
IW1 - very low absorption



Archipolis Tornis Beige
Eco-brick ± 400x65x40 mm

Porosity: ≤ 6%
IW1 - very low absorption



Archipolis Nemo White
Eco-brick ± 400x65x40 mm

Porosity: ≤ 6%
IW1 - very low absorption



Archipolis Vegas Yellow
Eco-brick ± 240x65x40 mm
Eco-brick ± 400x65x40 mm

Porosity: ≤ 6%
IW2 - low absorbency



Archipolis Frost Grey
Eco-brick ± 240x65x40 mm
Eco-brick ± 400x65x40 mm

Porosity: ≤ 6%
IIW2 - low absorbency



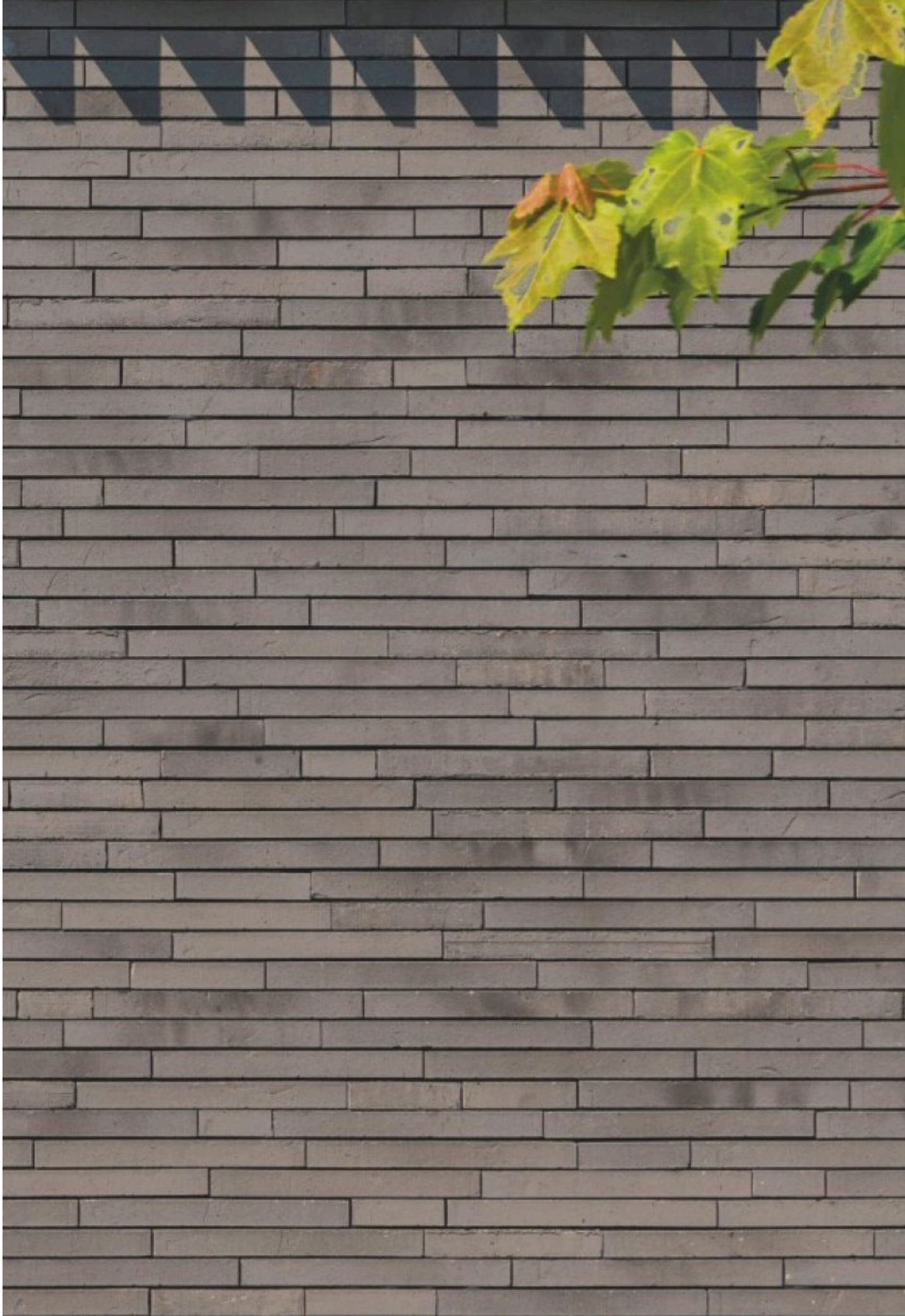
Archipolis Barn Brown
Eco-brick ± 240x65x40 mm

Porosity: ≤ 10%
IIW2 - low absorbency



Archipolis Barn Brown





Archipolis Frost Grey



LOHAS

CONTACT US

P 02 7259 1054
E info@lohasau.com

W lohasau.com
IG [@lohas_australia](https://www.instagram.com/lohas_australia)