

LOHAS

AUSTRALIA

ECO BRICK COLLECTION
IMPERIUM
SPEC GUIDE

LOHASAU.COM

Eco-brick is the perfect choice for environmentally aware housebuilders

Eco-brick offers all the benefits and features of traditional ceramic facing bricks, but in a slimmer format: An Eco-brick is 35 mm narrower, without compromising durability, strength or stability. The slimline size means 30% more can be fired on a kiln car at any one time. On a like-for-like brick this dematerialisation (doing more with less) results in reducing our overall CO₂ impact.

Roman format

Traditional bricklaying,
thin bricklaying or gluing

Long and
narrow



Iluzo

Traditional bricklaying
with the look of glued

2 support feet provide extra support,
due to the concavity in the laying
surface



Brown base
brick

Smooth to
slightly
rough surface

White-gray finish
with bare clay
layer

Slim Eco-brick
format

a classic mortar layer of 12 mm remains
possible

Roman legion of facade stones

-

Kaleilaag winks at the past

The Imperium facade bricks draw inspiration from the rich aesthetic heritage of Roman architecture. The brown base stones are meticulously finished with a layer of exposed clay, imparting facades with a commanding and robust presence. This design pays homage to the ancient Roman tradition of covering brick walls with cement, creating a powerful visual connection to the architectural customs of the past.

Exclusively in the slim Eco-brick format

In terms of sustainability, Imperium stands out as an excellent choice. These facing bricks are available in a slimmer Eco-brick format, providing additional space for insulation or expanding living areas. This eco-conscious design not only enhances energy efficiency but also promotes a greener and more spacious living environment, making Imperium a thoughtful and eco-friendly option for architectural projects.

Roman size: long and narrow

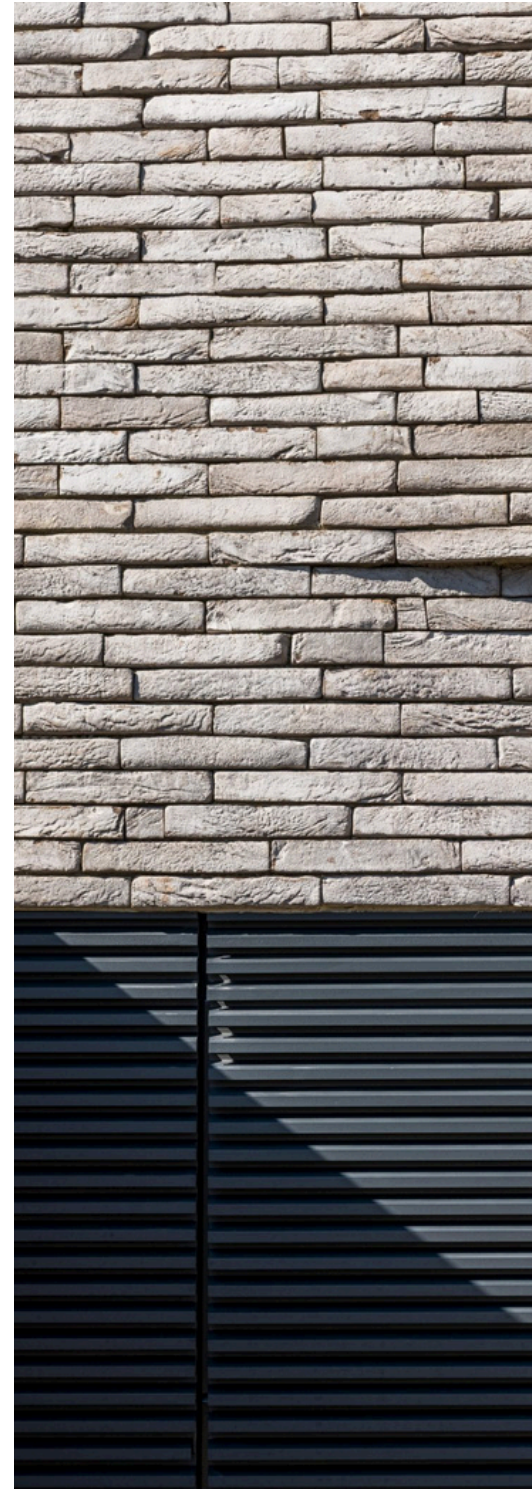
The bricks don't just emulate antiquity in their finish. Named after the Roman format ($\pm 238 \times 75 \times 40$ mm), the collection's balanced height-to-length ratio lends them an elongated look, perfect for robust horizontal brickwork. They're versatile for traditional, bonding, and thin-layer bricklaying techniques.

Also available in Iluzo

The collection is also offered in Eco-brick Iluzo format ($\pm 238 \times 75 \times 48$ mm). Iluzo facing bricks offer a glued appearance with the advantages of traditional bricklaying. What sets Iluzo apart is the concavity in the stone's laying surface, allowing for a standard mortar layer of 12 mm. Two supporting feet provide extra support and allow excess mortar to escape, creating the illusion of glued bricks. This option is perfect for achieving sleek horizontal lines on your facade.

From white to gray in 4 shades

The Imperium facing brick collection contains 4 colour shades: Albius, Flavius, Notus and Nerus. The shades vary in a colour scale from white to grey.



IMPERIUM

COLOUR RANGE



Imperium Albus
Eco-brick RF ± 238x75x40 mm
Eco-brick Iluzo ± 238x75x48 mm

Porosity: ≤ 19%
IW2 - low suction



Imperium Flavius
Eco-brick RF + 238x75x40 mm
Eco-brick Iluzo ± 238x75x48 mm

Porosity: ≤ 19%
IW2 - low suction



Imperium Notus
Eco-brick RF + 238x75x40 mm
Eco-brick Iluzo ± 238x75x48 mm

Porosity: ≤ 19%
IW2 - low suction



Imperium Nerus
Eco-brick RF + 238x75x40 mm
Eco-brick Iluzo ± 238x75x48 mm

Porosity: ≤ 19%
IW2 - low suction



Imperium Albius









Imperium Albius



LOHAS

CONTACT US

P 02 7259 1054
E info@lohasau.com

W lohasau.com
IG [@lohas_australia](https://www.instagram.com/lohas_australia)